

# 530 FIFTH AVENUE

**M** MOINIAN



530 5<sup>th</sup> Avenue  
Between 44<sup>th</sup> and 45<sup>th</sup> Street, NY, 10017



**Address:** 530 Fifth Avenue  
**Location:** Between 44<sup>th</sup> and 45<sup>th</sup>  
New York, NY 10017

**Total Retail Available:** 22,000 square feet to 36,000 Square Feet

<b>Floor Sizes:</b>	<b>Ceiling Heights:</b>
Ground Floor: 6,473 Square Feet	28 Feet
Mezzanine 6,764 Square Feet.	14'9" & 12' 10"
Lower Level: 9,500 Square Feet.	16 Feet

\*\*Additional space can be added: on 2<sup>nd</sup> floor 10'8" ceilings

**Window Display:**

New glass curtain wall over 42 feet of frontage on 5th Avenue.

**Possession:** Immediate

**Loading:** Full access to large ground floor loading dock.

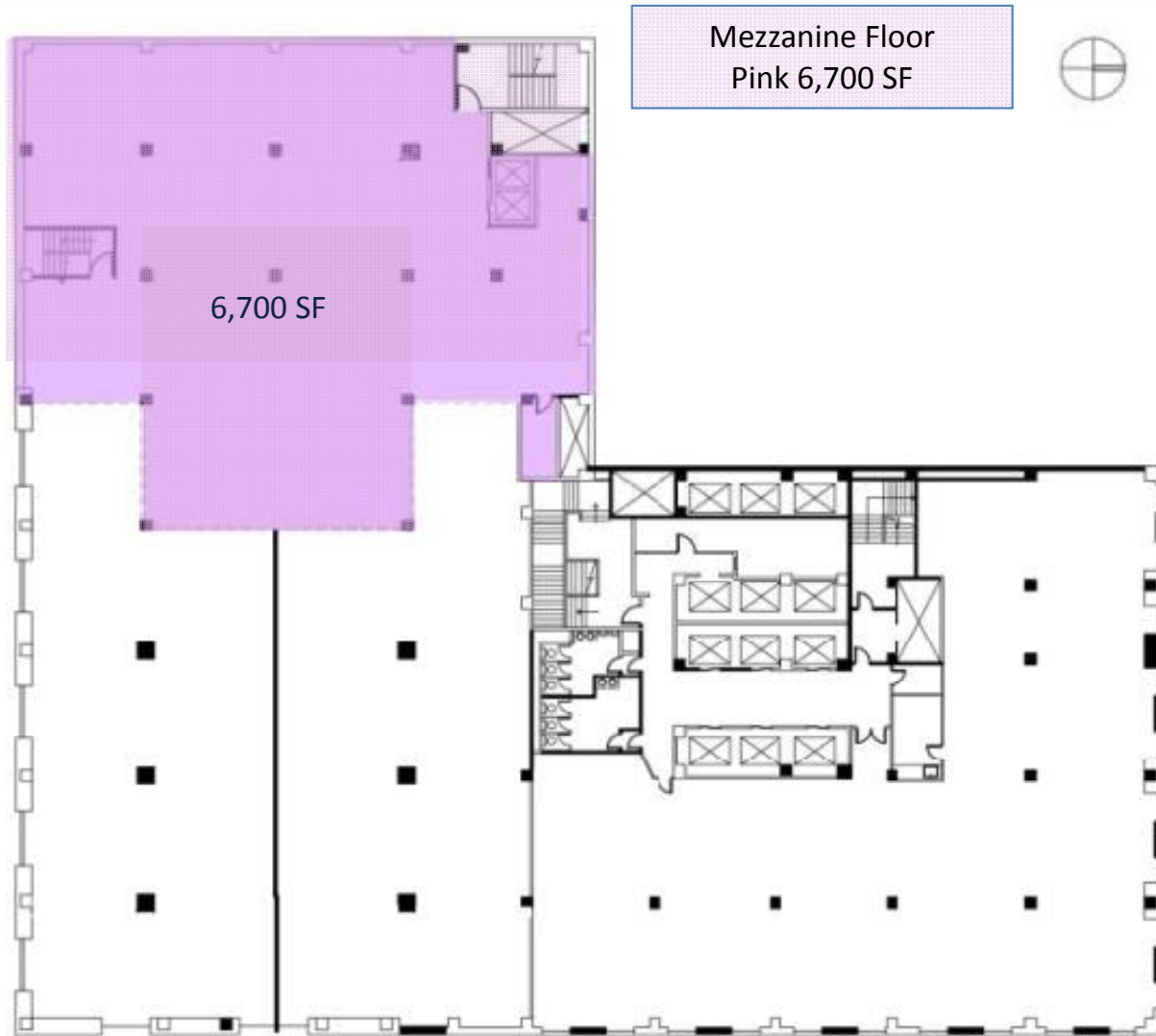
**Transportation:**

Easily accessible by eight subway lines. Conveniently located just steps from Grand Central Station, the 2nd largest transportation hub in New York City.



**530 5<sup>th</sup> Avenue**  
Between 44<sup>th</sup> and 45<sup>th</sup> Street, NY, 10017





530 5th Avenue  
 New York, NY 10016  
 Telephone: (212) 565-4000

Client: \_\_\_\_\_  
 1234 Avenue of the Americas  
 New York, NY 10020  
 Tel: (212) 461-1400  
 Fax: (212) 461-1472

**Gensler**

**GACE**  
 GOLDSTEIN ASSOCIATES  
 P.C.  
 ARCHITECTS & INTERIORS

110 William Street  
 New York, NY 10038  
 Telephone: (212) 761-2000

WD Engineers - Consultants, PLLC

110 William Street  
 New York, NY 10038  
 Telephone: (212) 761-2000

DATE: \_\_\_\_\_  
 BY: \_\_\_\_\_  
 \_\_\_\_\_  
 \_\_\_\_\_  
 \_\_\_\_\_  
 \_\_\_\_\_



**GENERAL NOTES**

\_\_\_\_\_

Project Name: \_\_\_\_\_  
 530 5th Avenue  
 New York, NY 10016

Project Number: \_\_\_\_\_  
 04-1700-000

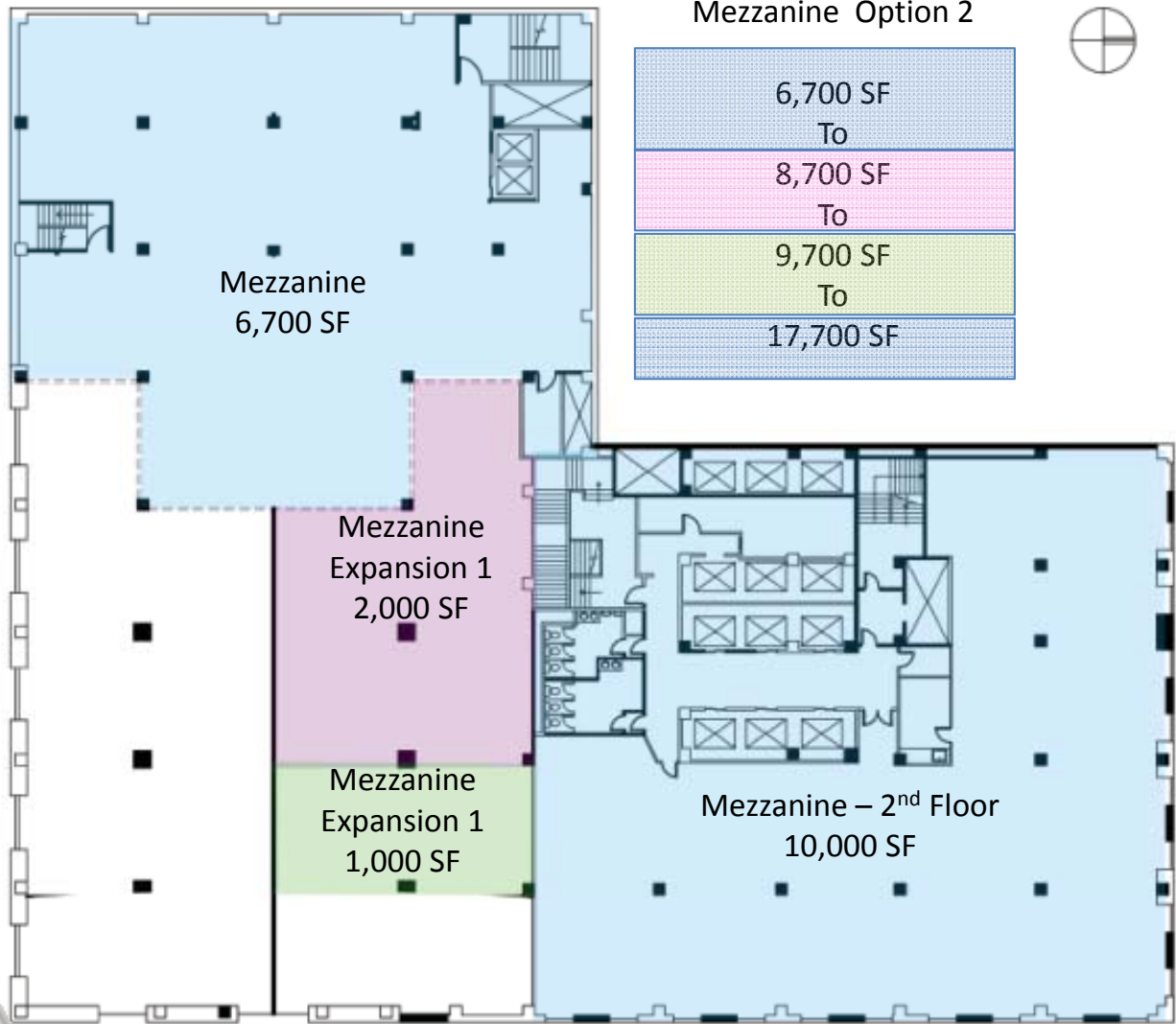
Drawn by Name: \_\_\_\_\_

\_\_\_\_\_

\_\_\_\_\_



530 5<sup>th</sup> Avenue  
 Between 44<sup>th</sup> and 45<sup>th</sup> Street, NY, 10017



**Mezzanine Option 2**

6,700 SF	To
8,700 SF	To
9,700 SF	To
17,700 SF	

530 5th Avenue  
New York, NY 10016  
Telephone: (212) 565-4000

Client: \_\_\_\_\_

**Gensler** 120 Avenue of the Americas  
New York, NY 10013  
Tel: (212) 512-1000  
Fax: (212) 512-1070

**GACE**  
GOLDSTEIN ASSOCIATES  
P.C.  
Architectural Firm  
100 West 30th Street  
New York, NY 10018  
Tel: (212) 693-1000  
Fax: (212) 693-1001

**WD Engineers - Consultants, PLLC**  
100 William Street  
New York, NY 10038  
Tel: (212) 693-1000  
Fax: (212) 693-1001

DATE: \_\_\_\_\_

SCALE: \_\_\_\_\_

**GENERAL NOTES**

1. \_\_\_\_\_

2. \_\_\_\_\_

3. \_\_\_\_\_

4. \_\_\_\_\_

5. \_\_\_\_\_

6. \_\_\_\_\_

7. \_\_\_\_\_

8. \_\_\_\_\_

9. \_\_\_\_\_

10. \_\_\_\_\_

11. \_\_\_\_\_

12. \_\_\_\_\_

13. \_\_\_\_\_

14. \_\_\_\_\_

15. \_\_\_\_\_

16. \_\_\_\_\_

17. \_\_\_\_\_

18. \_\_\_\_\_

19. \_\_\_\_\_

20. \_\_\_\_\_

21. \_\_\_\_\_

22. \_\_\_\_\_

23. \_\_\_\_\_

24. \_\_\_\_\_

25. \_\_\_\_\_

26. \_\_\_\_\_

27. \_\_\_\_\_

28. \_\_\_\_\_

29. \_\_\_\_\_

30. \_\_\_\_\_

31. \_\_\_\_\_

32. \_\_\_\_\_

33. \_\_\_\_\_

34. \_\_\_\_\_

35. \_\_\_\_\_

36. \_\_\_\_\_

37. \_\_\_\_\_

38. \_\_\_\_\_

39. \_\_\_\_\_

40. \_\_\_\_\_

41. \_\_\_\_\_

42. \_\_\_\_\_

43. \_\_\_\_\_

44. \_\_\_\_\_

45. \_\_\_\_\_

46. \_\_\_\_\_

47. \_\_\_\_\_

48. \_\_\_\_\_

49. \_\_\_\_\_

50. \_\_\_\_\_

51. \_\_\_\_\_

52. \_\_\_\_\_

53. \_\_\_\_\_

54. \_\_\_\_\_

55. \_\_\_\_\_

56. \_\_\_\_\_

57. \_\_\_\_\_

58. \_\_\_\_\_

59. \_\_\_\_\_

60. \_\_\_\_\_

61. \_\_\_\_\_

62. \_\_\_\_\_

63. \_\_\_\_\_

64. \_\_\_\_\_

65. \_\_\_\_\_

66. \_\_\_\_\_

67. \_\_\_\_\_

68. \_\_\_\_\_

69. \_\_\_\_\_

70. \_\_\_\_\_

71. \_\_\_\_\_

72. \_\_\_\_\_

73. \_\_\_\_\_

74. \_\_\_\_\_

75. \_\_\_\_\_

76. \_\_\_\_\_

77. \_\_\_\_\_

78. \_\_\_\_\_

79. \_\_\_\_\_

80. \_\_\_\_\_

81. \_\_\_\_\_

82. \_\_\_\_\_

83. \_\_\_\_\_

84. \_\_\_\_\_

85. \_\_\_\_\_

86. \_\_\_\_\_

87. \_\_\_\_\_

88. \_\_\_\_\_

89. \_\_\_\_\_

90. \_\_\_\_\_

91. \_\_\_\_\_

92. \_\_\_\_\_

93. \_\_\_\_\_

94. \_\_\_\_\_

95. \_\_\_\_\_

96. \_\_\_\_\_

97. \_\_\_\_\_

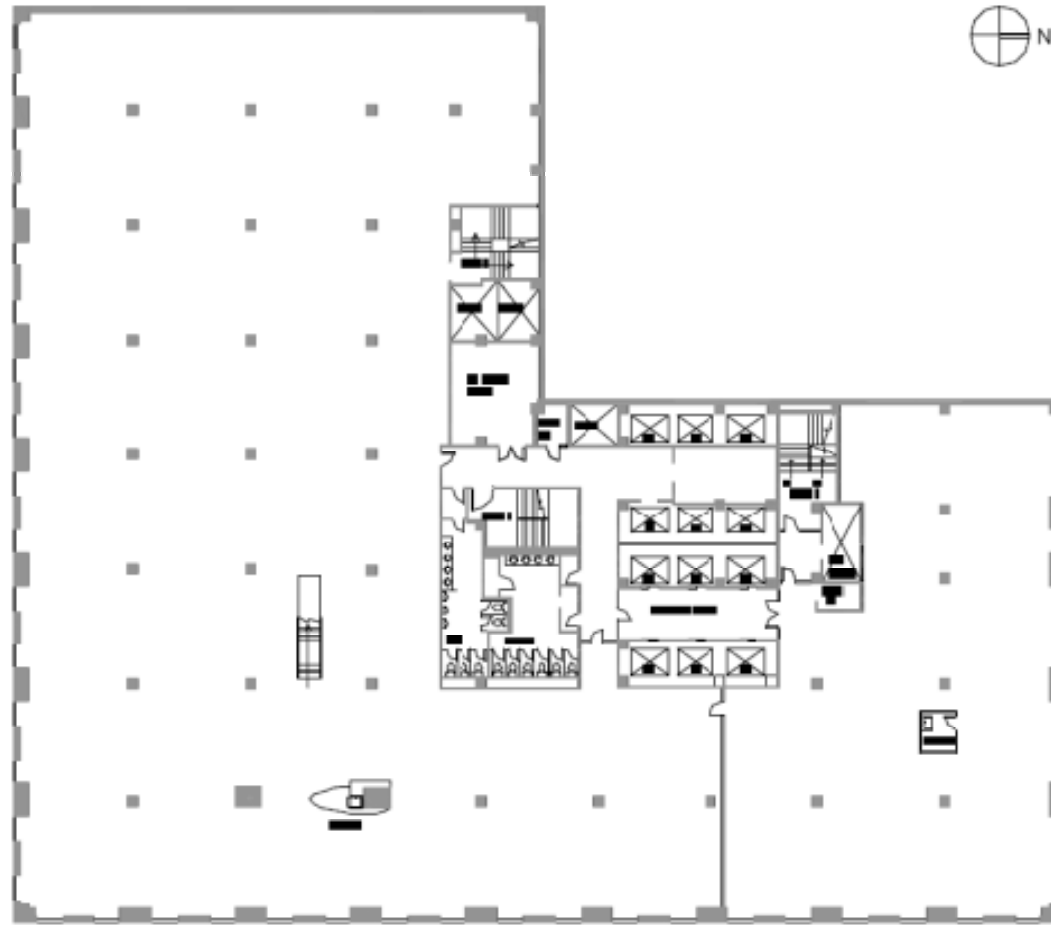
98. \_\_\_\_\_

99. \_\_\_\_\_

100. \_\_\_\_\_



530 5<sup>th</sup> Avenue  
Between 44<sup>th</sup> and 45<sup>th</sup> Street, NY, 10017



FIFTH AVENUE

**RDM**  
 200 Lexington Ave, New York, NY 10016  
 TEL: 212 213 8888 FAX: 212 213 8928  
 WWW.RDMREALESTATE.COM



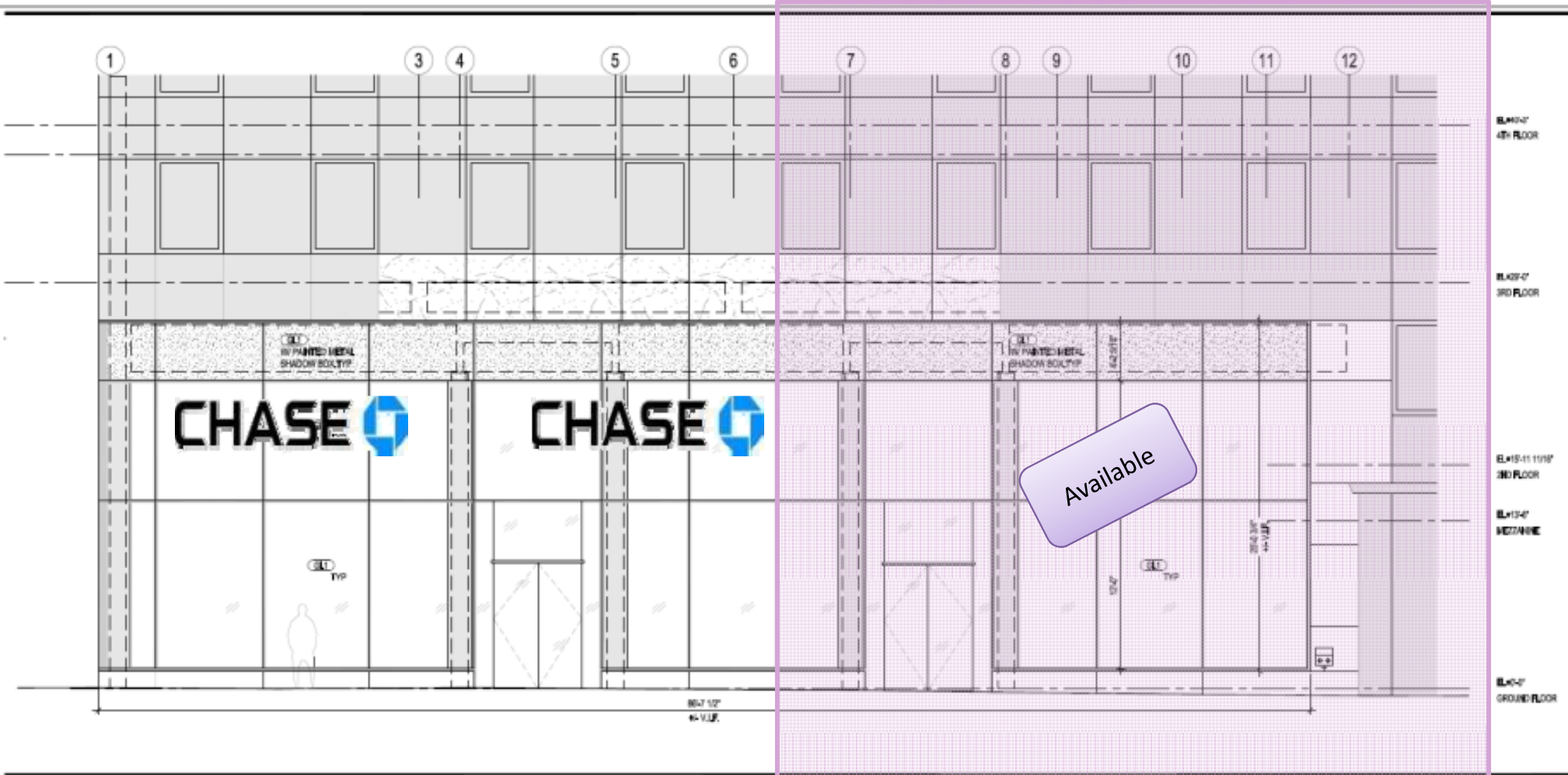
530 FIFTH AVENUE  
 3RD FLOOR  
 SCALE: 1/32" = 1'-0"

SILVERSTEIN PROPERTIES  
 530 Fifth Avenue  
 New York, NY 10036



530 5<sup>th</sup> Avenue  
 Between 44<sup>th</sup> and 45<sup>th</sup> Street, NY, 10017





FIFTH AVENUE ELEVATION  
SCALE: 1/4"=1'-0"



530 5<sup>th</sup> Avenue  
Between 44<sup>th</sup> and 45<sup>th</sup> Street, NY, 10017



530 5<sup>th</sup> Avenue  
 Between 44<sup>th</sup> and 45<sup>th</sup> Street, NY, 10017



**Jeff Winick**  
212.792.2601  
[jeff@winick.com](mailto:jeff@winick.com)

**Lori Shabtai**  
212.792.2641  
[lori@winick.com](mailto:lori@winick.com)

**Darrell Rubens**  
212.792.2616  
[rubens@winick.com](mailto:rubens@winick.com)

**Leasing Agent:**  
Winick Realty Group LLC  
212-792-2600  
[www.winick.com](http://www.winick.com)  
[www.5305th.com](http://www.5305th.com)

**REBNY**<sup>®</sup>  
REAL ESTATE BOARD OF NEW YORK

**M MOINIAN**



**530 5<sup>th</sup> Avenue**  
Between 44<sup>th</sup> and 45<sup>th</sup> Street, NY, 10017